

EXHIBIT

F/K/A MACOM / LAPP FARM SUBDIVISION

LANDSCAPE ELEMENT PROVISIONS

LANDSCAPE ELEMENTS ARE RESERVED FOR AND GRANTED TO THE PENNACROSS KNOLL HOMEOWNERS ASSOCIATION. THEIR INSTALLATION AND MAINTENANCE OVER ALL THE COMMON AREAS SHALL BE THE RESPONSIBILITY OF THE PENNACROSS KNOLL HOMEOWNERS ASSOCIATION. THE ASSOCIATION SHALL HAVE THE RIGHT TO REMOVE, REPLACE, REPAIR AND MAINTAIN ANY LANDSCAPE ELEMENTS INSTALLED BY ANY HOMEOWNER. THE ASSOCIATION SHALL HAVE THE RIGHT TO REMOVE ANY LANDSCAPE ELEMENTS INSTALLED BY ANY HOMEOWNER THAT DO NOT MEET THE REQUIREMENTS OF THESE PROVISIONS. THE ASSOCIATION SHALL HAVE THE RIGHT TO REMOVE ANY LANDSCAPE ELEMENTS INSTALLED BY ANY HOMEOWNER THAT DO NOT MEET THE REQUIREMENTS OF THESE PROVISIONS. THE ASSOCIATION SHALL HAVE THE RIGHT TO REMOVE ANY LANDSCAPE ELEMENTS INSTALLED BY ANY HOMEOWNER THAT DO NOT MEET THE REQUIREMENTS OF THESE PROVISIONS.

LOT DETAIL



SCALE: 1" = 100'

BASES OF MEASUREMENT IS AS SHOWN ON THIS PLAN

IF MEASUREMENT IS SHOWN ON THIS PLAN

IF MEASUREMENT IS SHOWN ON THIS PLAN

IF MEASUREMENT IS SHOWN ON THIS PLAN

IF MEASUREMENT IS SHOWN ON THIS PLAN

IF MEASUREMENT IS SHOWN ON THIS PLAN

IF MEASUREMENT IS SHOWN ON THIS PLAN

IF MEASUREMENT IS SHOWN ON THIS PLAN

IF MEASUREMENT IS SHOWN ON THIS PLAN

IF MEASUREMENT IS SHOWN ON THIS PLAN

IF MEASUREMENT IS SHOWN ON THIS PLAN

IF MEASUREMENT IS SHOWN ON THIS PLAN

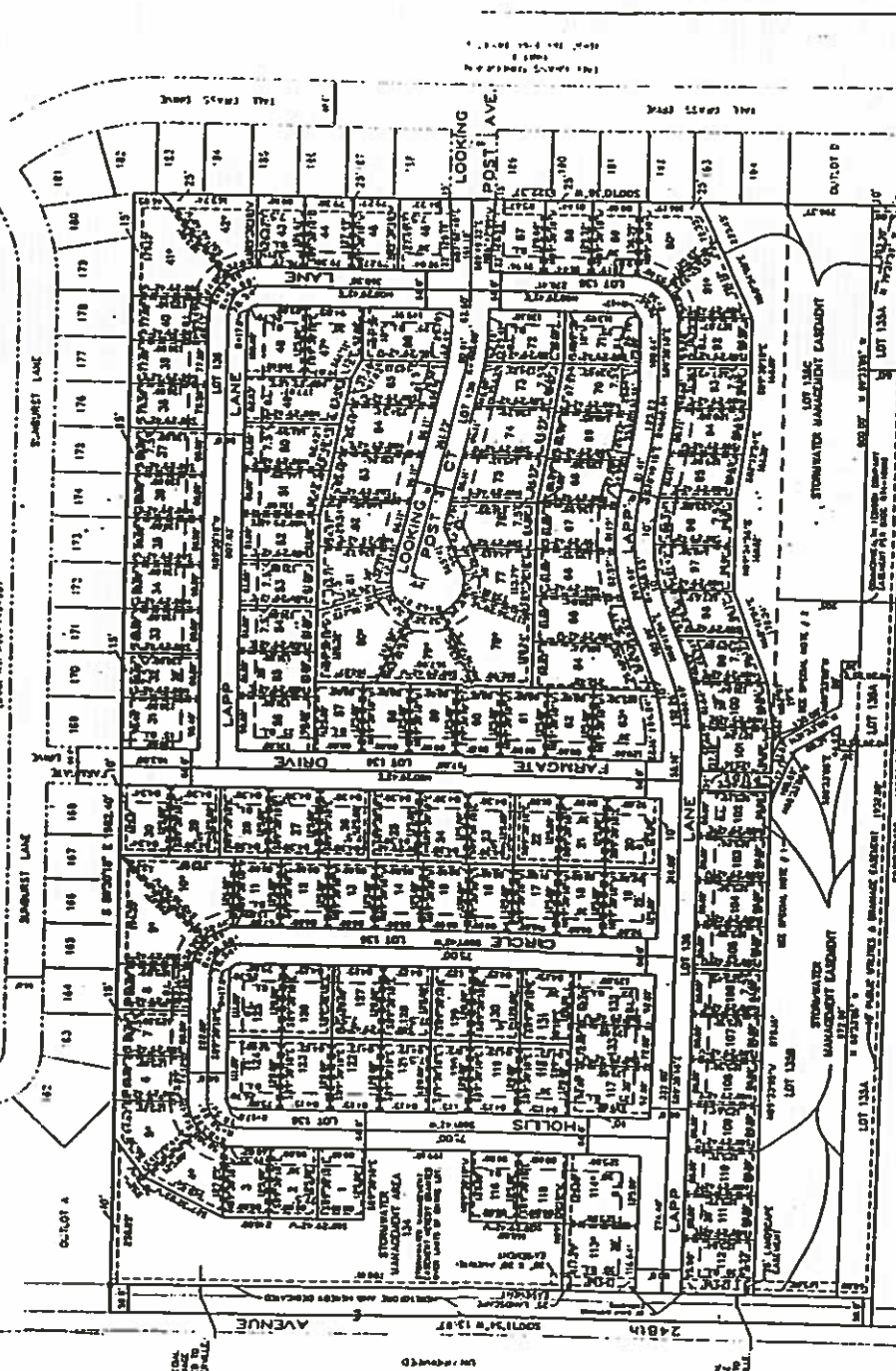
IF MEASUREMENT IS SHOWN ON THIS PLAN

IF MEASUREMENT IS SHOWN ON THIS PLAN

FINAL SUBDIVISION PLAT FOR PENNCROSS KNOLL

THIS IS PART OF THE SOUTH HALF OF THE INTEREST GRANTED BY DEED TO B. B. BERRY, SR., DATED 12/15/71, BEING A PART OF THE WEST 1/4 SECTION 16, T10N, R10W, S10E, COUNTY OF HUNTER, MISSISSIPPI.

DATE: 04/23/2024
 DRAWN BY: [Name]
 CHECKED BY: [Name]



LOT	AREA (SQ FT)	AREA (SQ YD)	AREA (ACRES)
101	10,000	111.11	0.228
102	10,000	111.11	0.228
103	10,000	111.11	0.228
104	10,000	111.11	0.228
105	10,000	111.11	0.228
106	10,000	111.11	0.228
107	10,000	111.11	0.228
108	10,000	111.11	0.228
109	10,000	111.11	0.228
110	10,000	111.11	0.228
111	10,000	111.11	0.228
112	10,000	111.11	0.228
113	10,000	111.11	0.228
114	10,000	111.11	0.228
115	10,000	111.11	0.228
116	10,000	111.11	0.228
117	10,000	111.11	0.228
118	10,000	111.11	0.228
119	10,000	111.11	0.228
120	10,000	111.11	0.228
121	10,000	111.11	0.228
122	10,000	111.11	0.228
123	10,000	111.11	0.228
124	10,000	111.11	0.228
125	10,000	111.11	0.228
126	10,000	111.11	0.228
127	10,000	111.11	0.228
128	10,000	111.11	0.228
129	10,000	111.11	0.228
130	10,000	111.11	0.228
131	10,000	111.11	0.228
132	10,000	111.11	0.228
133	10,000	111.11	0.228
134	10,000	111.11	0.228
135	10,000	111.11	0.228
136	10,000	111.11	0.228
137	10,000	111.11	0.228
138	10,000	111.11	0.228
139	10,000	111.11	0.228
140	10,000	111.11	0.228
141	10,000	111.11	0.228
142	10,000	111.11	0.228
143	10,000	111.11	0.228
144	10,000	111.11	0.228
145	10,000	111.11	0.228
146	10,000	111.11	0.228
147	10,000	111.11	0.228
148	10,000	111.11	0.228
149	10,000	111.11	0.228
150	10,000	111.11	0.228
151	10,000	111.11	0.228
152	10,000	111.11	0.228
153	10,000	111.11	0.228
154	10,000	111.11	0.228
155	10,000	111.11	0.228
156	10,000	111.11	0.228
157	10,000	111.11	0.228
158	10,000	111.11	0.228
159	10,000	111.11	0.228
160	10,000	111.11	0.228
161	10,000	111.11	0.228
162	10,000	111.11	0.228
163	10,000	111.11	0.228
164	10,000	111.11	0.228
165	10,000	111.11	0.228
166	10,000	111.11	0.228
167	10,000	111.11	0.228
168	10,000	111.11	0.228
169	10,000	111.11	0.228
170	10,000	111.11	0.228
171	10,000	111.11	0.228
172	10,000	111.11	0.228
173	10,000	111.11	0.228
174	10,000	111.11	0.228
175	10,000	111.11	0.228
176	10,000	111.11	0.228
177	10,000	111.11	0.228
178	10,000	111.11	0.228
179	10,000	111.11	0.228
180	10,000	111.11	0.228
181	10,000	111.11	0.228
182	10,000	111.11	0.228
183	10,000	111.11	0.228
184	10,000	111.11	0.228
185	10,000	111.11	0.228
186	10,000	111.11	0.228
187	10,000	111.11	0.228
188	10,000	111.11	0.228
189	10,000	111.11	0.228
190	10,000	111.11	0.228
191	10,000	111.11	0.228
192	10,000	111.11	0.228
193	10,000	111.11	0.228
194	10,000	111.11	0.228
195	10,000	111.11	0.228
196	10,000	111.11	0.228
197	10,000	111.11	0.228
198	10,000	111.11	0.228
199	10,000	111.11	0.228
200	10,000	111.11	0.228
201	10,000	111.11	0.228
202	10,000	111.11	0.228
203	10,000	111.11	0.228
204	10,000	111.11	0.228
205	10,000	111.11	0.228
206	10,000	111.11	0.228
207	10,000	111.11	0.228
208	10,000	111.11	0.228
209	10,000	111.11	0.228
210	10,000	111.11	0.228
211	10,000	111.11	0.228
212	10,000	111.11	0.228
213	10,000	111.11	0.228
214	10,000	111.11	0.228

RYTECH CONSULTANTS, INC.
 ENGINEERS / SURVEYORS
 1001 WOODSTOCK AVE., SUITE 100, HUNTER, MISSISSIPPI 39236
 PHONE: 662-893-1111
 FAX: 662-893-1112

DATE: 04/23/2024
 DRAWN BY: [Name]
 CHECKED BY: [Name]