

PENNCROSS KNOLL *Views*

The Newsletter of the Penncross Knoll Homeowners Association

Upcoming LOCAL EVENTS

Dino Safari – A Drive-Thru Adventure!, Fox Valley Mall, Northeast lot near Denny's, 13 Times - May 7th 12pm through May 23 9:00 pm. Drive through and join 35 full-scale, moving, scientifically accurate dinosaurs on a prehistoric globetrotting expedition. Tickets required.
www.shopfoxvalleymall.com/event/Dino-Safari-A-Drive-Thru-Adventure/2145550413

Brewery Comedy Tour at Granite City, Sunday, May 16th, 6:00-7:30pm, Granite City Food and Brewery, 1828 Abriter Court., Naperville, Top-notch comedians traveling the country in crews of 2-4 comedians performing seven nights a week in 48 states.
www.eventbrite.com/e/the-brewery-comedy-tour-at-granite-city-tickets-142898032863

Free Shredding Event, Saturday, May 22nd, 2:00-5:00pm, Baird and Warner, 11914 Illinois Route 59, Plainfield.

Sweet Pickins Market, Sunday, May 23, 10am-3pm, Naper Settlement, 523 S. Webster St., Naperville – pop-up market event featuring vintage finds, rusty relics, shabby goodness and one-of-a-kind treasures.
www.napersettlement.org/calendar.aspx?EID=3006

Soul Fest, Saturday, June 5, 12pm-10pm, Naper Settlement, 523 S. Webster St., Naperville - an Outdoor Bazaar filled with Food and Artisan vendors, Live Music performances by local Jazz, Rhythm & Blues, Gospel, Reggae and House artist on the Main Stage celebrating African American and Caribbean Descendant's culture.
www.napervillesoulfest.com

14th Annual Frontier Kite Fly Festival, Sunday, June 6th, Frontier Sports Complex, 3380 Cedar Glade Dr., Naperville - A free event to view gigantic kites flown by kite enthusiasts from Chicago Kite. Participants can also practice flying their own kite.
www.napervilleparks.org

Naperville 10K and 5K, Sunday, June 13th, Race winds through some of Naperville's scenic sites ending at Centennial Park. Registration is now open.
www.naperville10K.com

Downtown Naperville Classic Car Show, June 19th, 9am-Noon, Downtown Naperville, 175 W. Jackson Ave., (between Eagle and Main Streets). Take a leisurely stroll down the Riverwalk and enjoy looking at over 100 Classic Cars in all makes and models.
www.downtownnaperville.com/event/downtown-naperville-classic-car-show

Naperville Fine Art and Artisan Fair, June 26-27th, 10am-5pm, Naper Settlement, 523 Webster St., Naperville – Wander through the fair to see the wares of over 110 artists and artisans.

INSIDE THIS ISSUE

<i>The Happy Gardener</i>	2
<i>Board Directory</i>	3
<i>Storm Scams</i>	4
<i>Tree Trimming</i>	5
<i>Pet Tales</i>	6
<i>Puzzler Page</i>	7
<i>Neighborhood Updates</i>	8

**Memorial
Day**
May 31st



The Happy



Annette Carson | The Growing Place

Gardener



container may help repel insects. Lavender makes beautiful, aromatic bedding that attracts butterflies and hummingbirds. Sage foliage comes in silver, purple, and variegated, offering not only culinary uses but a great textured addition to container designs or as a border plant.

Indoor & Outdoor Herbs

When growing herbs indoors, they must be near a sunny window. Provide good drainage and pinch back tips regularly. A few choices for indoor herbs are chives, basil, lemon balm, parsley, mints, and chervil. Herbs grow best outside in full sun with lightly fertilized, good draining, average soil. Keep the garden clipped, harvesting in late morning after the dew has evaporated.

The Growing Place grows 120 varieties of herbs onsite. The edible herbs are put out on the tables alphabetically by their common name. They are grown naturally and non-GMO in The Growing Place greenhouse, using only products approved for organic growing. To be able to grow something is an opportunity for making memories. Share and make recipes, cut for creative arrangements, or sit beside as an attractive conversation piece.

Recipes with Fresh Herbs

Insalata Caprese: Slice ripe tomatoes and fresh mozzarella cheese. Tear a handful of fresh basil, mix together with a little olive oil and balsamic vinegar, salt, and pepper.

Chive Dip for Crackers: Mix 1 Tbsp. of chopped chives and 1 Tbsp. of fresh dill (optional) to 8 oz. cream cheese.

Parsley Sauce for Pasta or Vegetables: Use 2 cups fresh chopped parsley/mixed herbs to 1 cup olive oil. Let steep for 15 minutes then toss with your pasta or vegetables, fresh or cooked.

Shish-kabob: Soak rosemary stems (R. officinalis have the straightest and longest stems) in water for 10-15 minutes. Use the stems as skewers for meat and vegetable shish-kabobs and grill as usual.

Scent and flavor are two senses that we all can relate to when it comes to food and gardens. Do you use herbs for culinary or ornamental use? Herbs can easily be grown in containers or raised beds and make for a fun activity to do with kids and kids at heart.

Edible & Decorative Herbs

If you are growing herbs to use in cooking and baking, grow the herbs that normally flavor the foods you enjoy eating. Thyme is a perennial herb invaluable for flavoring meats, soups, stews and other dishes. One of the most popular culinary herbs is basil. In Illinois, it is grown as an annual and requires full sun. Choose the basil variety that best suits your needs, making tea or adding to dressings, sauces, breads, meats, pestos, herbed oils and butters. Fresh mint will make your beverages, salads, and desserts sought after by family and friends.

Know that many culinary herbs are also ornamental, and can mix in well with other annuals and perennials. Herbs add texture to a container garden or fragrantly tower over a fairy garden. They are deer and rabbit resistant, making them useful when planted with annuals and perennials in a border or container design.

If growing herbs for decorative purposes only, choose ones that flower, are fragrant, or provide the height, color, shape, and texture you want to see in your garden. A 2' fragrant, purple blooming Scented Geranium Citronella in a patio



Dear Editor

Articles, classified ads and written submissions for the Penncross Knolls Views newsletter are to be submitted to Jan Foster by the 15th day of February, April, June, August, October and December.

The Penncross Knoll Views newsletter is a bi-monthly publication for the homeowners. Newsletters are mailed to residents in January, March, May, July, September and November.

Classified ads are free to all Penncross Knoll residents. A classified ad is something to sell, looking for something to buy, lost items, found items, or in need of childcare, etc.

EDITOR

Jan Foster

fosterpbs@msn.com

PENNCROSS KNOLL HOMEOWNERS ASSOCIATION Board of Directors

Jeff HorwathDirector

Kajal PalDirector

Lee ChowDirector

Ramesh ThumuDirector

Kristi BloedornDirector

Penncross Knoll Homeowners Association

Contact Address:

Penncross Knoll HOA
PO Box 9130
Naperville, IL 60567-9130

Contact Board Members: pkhoaboard@gmail.com

Property Management Company

Price Group 630-922-0233

COMMERCIAL ADVERTISING DEADLINE - 15TH COST EFFECTIVE & NO CONTRACTS TO SIGN

630-337-6714 • katherine@allegranaperville.com
www.allegranaperville.com

ALLEGRA
MARKETING • PRINT • MAIL

Please support the advertisers in your newsletter. They make this publication possible free of charge to the association and homeowners!

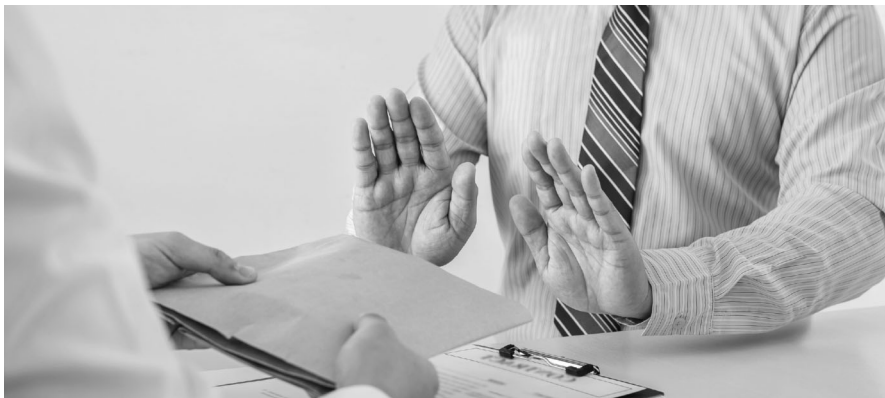
Thank you!



"Jumped over moon. Impressive."

"The appearance of an advertisement in this newsletter should not be interpreted as an endorsement of the product, service or provider in the advertisement. The Association or Allegra Marketing Print Mail are not responsible nor liable for the content of any advertisement published, herein."

STORM REPAIR & ROOFING SCAMS



Following thunderstorms, tornadoes and windstorms, scammers often move quickly into communities to take advantage of homeowners, pressuring them to make quick decisions about repairs. Roofing repairs are their number one target.

Residents should be cautious about individuals soliciting door-to-door or random phone calls offering to assess your roofing damage. Don't view your insurance carrier as your adversary, but as a partner in getting legitimate repairs done and completed by competent professionals.

If you are suspicious about a contractor you can call the Illinois Attorney Generals Consumer Fraud Hotline 1-800-386-0618.

- Be wary of contractors who go door-to-door to offer repair services. Ask for recommendations from people you know and trust and, whenever possible, use established local contractors.
- Visit the Better Business Bureau's Central Illinois or Chicago websites to see if a business is a member and whether any complaints have been lodged against it.
- Even if there is a need to act quickly, shop around. Get written estimates from multiple contractors, and don't be rushed into a deal.
- Get all of the terms of a contract in writing, and obtain a copy of the signed contract.
- Never make full payment until all the work has been completed to your satisfaction.
- Never pay in cash.
- Be aware that you have the right to cancel a contract within three business days if you signed it based on the contractor's visit to your home.
- In the case of disaster repair, you have an additional right to cancel. If your insurance carrier denies coverage, you have the right to cancel the contract within five days of when your insurance carrier denies your coverage.
- Ask to see required state and local permits and licenses. Insurance adjusters and roofers must be licensed by state agencies. If the contractor does not have a required license, or if the name on the license doesn't match the name on the contractor's business card or truck, that should raise a red flag. Please visit the Illinois Department of Financial and Professional Regulation's website to search licenses. Contact the Department of Insurance at 866-445-5364 to verify that the public adjuster is licensed and in good standing.

The Illinois Home Repair and Remodeling Act requires contractors to provide customers with written contracts for any repair or remodeling work costing more than \$1,000. A contract must be signed by both the customer and the contractor. The law also requires contractors to carry at least the minimum amounts of insurance for property damage, bodily injury and improper home repair. Contractors also must provide consumers with an informational pamphlet entitled "Home Repair and Construction: Know Your Rights."

During tornado season, watch for the debris cloud...

An approaching cloud of debris can often signal an oncoming tornado, even if a funnel is not visible. Before a tornado hits, the wind may die down and the air may become very still.

You often hear that, if caught in the path of a tornado while driving, you should get out and lie in a ditch. That would be better than staying in the car. But getting in a ditch should be a last-ditch attempt to survive the storm. If tornadoes are predicted for your area, avoid driving if at all possible and remain near a sturdy building.

Never shelter under an overpass. You will die or sustain severe injuries. There are no handholds in an overpass. The wind becomes stronger underneath and can fill the space with deadly flying debris.

Never stop under an overpass. You will prevent people on the road from getting to shelter and you will have no extra protection yourself.

Have disaster supplies ready. You'll need a flashlight and extra batteries when the power goes out, plus warm clothing and rain-proof clothing. Emergency food and water and a nonelectric can opener, as well as medicines, cash, credit cards and sturdy shoes. Take your cell phone into your shelter, but don't expect it to work after the storm.

In case family members are separated, ask an out-of-town relative or friend to be a contact. Everyone in the family should know the contact's phone number.

About 75 percent of Americans live in areas that experience tornadoes, flooding, hurricanes, earthquakes or hail, according to the Federal Emergency Management Agency (FEMA).

Help Keep Penncross Knoll's Trees Trimmed & Landscaped

TRIM YOUR TREES... FREE CURBSIDE BRUSH PICKUP

With Naperville's annual **FREE CURBSIDE BRUSH PICKUP** scheduled to begin May 10, area homeowners now have the opportunity to take a critical look at their property and do some maintenance on their shrubs and tree canopy.

This is also a good time to ensure that your trees overhanging the public right-of-way (streets and sidewalks) comply with the City of Naperville recommendations of a minimum of 12 to 14 feet clearance on the street side and 8 to 12 feet on the side of the sidewalk (a larger range on the sidewalk side for both clearance and to balance the tree out once trimmed). Failure to comply for trees overhanging the street may very well lead to an unexpected "trimming" by the garbage truck as it makes its weekly rounds.

Tips on Tree Trimming

Making Proper Pruning Cuts

Pruning cuts should be made just outside the branch collar. The branch collar contains trunk or parent branch tissue and should not be damaged or removed. If the trunk collar has grown out on a dead limb to be removed, make the cut just beyond the collar. Do not cut the collar. If a large limb is to be removed, its weight should first be reduced. This is done by making an undercut about 12 to 18 inches from the limb's point of attachment. Make a second cut from the top, directly above or a few inches farther out on the limb. Doing so removes the limb, leaving the 12- to 18-inch stub. Remove the stub by cutting back to the branch collar. This technique reduces the possibility of tearing the bark.

How Much Should Be Pruned?

The amount of live tissue that should be removed depends on the tree's size, species, and age, as well as the pruning objectives. Younger trees tolerate the removal of a higher percentage of living tissue better than mature trees do. Generally, no more than 25% of the crown should be removed at once, and less for mature trees. Removing even a single, large-diameter limb can result in significant canopy loss and can create a wound that the tree may not be able to close. Care should be taken to achieve pruning objectives while minimizing live branch loss and wound size. Particularly for young trees, small branches can be cut easily with hand pruners. Scissor-type or bypassblade hand pruners are preferred over the anvil type as they make cleaner, more accurate cuts. Cuts larger than one-half inch in diameter should be made with lopping shears or a pruning saw. Hedge shears should be used for shaping hedges only. Do not use shears to prune a tree. Whatever tool you use, make sure it is kept clean and sharp.

Establishing a Strong Scaffold Structure

A good structure of primary branches should be established while the tree is young. These limbs, called scaffold branches, are a mature tree's framework. Properly trained young trees will develop a strong structure that requires less corrective pruning as they mature. The goal in training young trees is to establish a

strong, central trunk with sturdy, well-spaced branches. This mimics tree growth in forest settings where outward branching is limited by neighboring trees. Some tree species develop some or all these characteristics naturally when grown openly in an urban or park setting. Others require more frequent attention.

Trunk Development

For most young trees, maintain a single dominant leader growing upward. Do not prune back the tip of this leader or allow secondary branches to outgrow the main leader. Sometimes, a tree will develop double leaders known as codominant stems. Codominant stems can lead to structural weaknesses, so it is best to remove or shorten one of the stems while the tree is young. A tree's secondary branches contribute to the development of a sturdy, well-tapered trunk. When numerous branches are being removed, it is preferable to retain some, at least temporarily, to promote trunk diameter growth.

Permanent Branch Selection

Most of the branches present on a young tree at planting will be pruned away at maturity to provide clearance for mowing, pedestrians, and/or vehicle traffic. The height of the lowest permanent branch is determined by the tree's intended function and location in the landscape. The road side of a street tree may be raised to 16 feet to accommodate traffic. In most other situations, 8 feet of clearance is sufficient. Trees used as screens or wind breaks, however, usually branch low to the ground. Sufficient branch spacing and balance, both vertically and radially, is important. The space between permanent branches should be approximately 3 percent of the tree's eventual height. Beyond spacing, the strength of branch structure depends on the relative size of the branches and branch angles. Branches similar in diameter to the trunk or limb from which they arise are more prone to failure than those smaller in diameter. Narrow angles of attachment or tight crotching can enclose bark within a branch union. Such growth is called included bark, a condition that weakens the branch attachment and may lead to failure when the tree matures. Branches with weak attachments should be pruned while still small.



Pet Tales

By the Naperville Area Humane Society

1620 W. Diehl Road | Naperville | 630-420-8989

*Thank you for
supporting our homeless
friends!*

WIN A 2021 AIRSTREAM



**\$100 buys you a 1 in
2,000 chance to win a
2021 Airstream!**

(Retail value \$51,500)

Purchase your raffle tickets here:

<https://www.naperhumane.org/airstream-affle>

You can purchase as many raffle tickets as you wish, subject to availability (2,000 tickets are being sold). The cost of 1 raffle ticket is \$100. Each raffle ticket grants 1 entry into the raffle. The winner may elect to receive a cash prize of \$30,000 in lieu of the Airstream Bambi.

The potential winner of the raffle will be randomly selected on June 5, 2021, at Naperville Area Humane Society, 1620 W. Diehl Road, Naperville, IL 60563.

Winner does not need to be present to win. Good Luck!

SUMMER CAMP

Join the Naperville Area Humane Society in Animals & Us Summer Camp! Summer Camp gives children the opportunity to learn about animal sheltering, behavior and more!

In addition to interacting with animals at the shelter, summer camp includes guest speakers that focus on all types of animals, including farm animals and wildlife.

Our unique program is offered in weekly sessions by age. Camp will follow social distancing and government guidelines, masks are required.

Please visit our website for dates, details and to register:
www.naperhumane.org/summer-camp

Adoptable Pets of the Month...



Sassy | Female | 1 Year Old

"Sassy, but classy" is my motto. I'm actually quite refined. Almost everything you need to know about me is in my sweet, sweet face. I come equipped with patience, manners and goofs. I've been known to be quite the "Mama Bear" to many a puppy that I've met. I've been picky about some friends (aren't we all a bit?) but I seem to like most other refined canine companions. Count me out of canoodling with any cats though, OK? To know me is to love me. Once you do, you'll wonder where I've been all your life. Call NAHS to set up an appointment snuggle with The Sass.



Tigger | Female | 13 Years Old

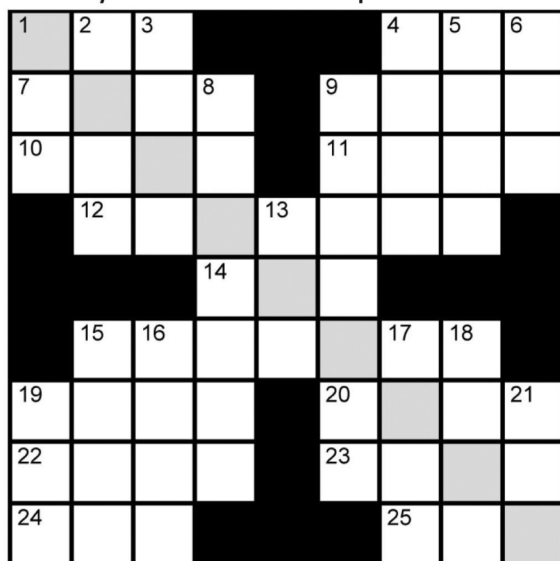
I am a quiet and gentle kitty looking for a quiet home to spend my golden years. I can be a little shy in new situations, but you will see that I am a super sweet girl once I feel comfortable and safe. I enjoy human company and will always be close by. I am a lap kitty but I am not necessarily bold enough to invite myself onto your lap so I might wait for you to put me there. I really enjoy being brushed and appreciate the help with keeping my coat soft and shiny. So if you are looking for an affectionate kitty to keep you company, please make an appointment to meet me...I really would like a home to call my own again.

PUZZLER PAGE

Bear's Eye or Black Caps

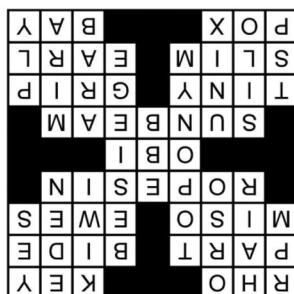
Across

1. Pi follower
4. Lock opener
7. Actor's goal
9. Wait
10. Soybean paste
11. Farm females
12. Entices
14. ____-Wan Kenobi
15. Ray of natural light
19. Very small
20. Film crew member
22. Thin
23. Viscount's superior
24. Chicken ____
25. Chesapeake, e.g.



Down

1. Engine speed, for short
2. "Aquarius" musical
3. Approximately
4. Tropical fruit
5. Genesis locale
6. Thumbs-up
8. Sandwich, Edam or Champagne
9. Surround, as a castle
13. Wane
15. Fodder holder
16. Popular computer operating system
17. Spirited horse
18. Oscar winner Sorvino
19. Recipe amt.
21. Layer



The headline is a clue to the answer in the diagonal.

Show and Tell

G Y E S O L C S I D N E C
D A E R P S I H I O Y X B
G T R O T O U T I E F H E
I D S E T O U T L R I I U
V A N N O U N C E S T B N
E R A L C E D C T P O I V
O G Q S M T I A K E N T E
U A S X S T T T E A R E I
T A M B E E W O N K T E L
Y R E T C U R T S N I B A
T E M G T R A P M I N A E
R P Y T A L U L X Z F R V
O O E O H T H K O E O E E
P R S T N E S E R P R M R
S T L P N O T U P Q M S T
N I A L P X E F I L L I N

ANNOUNCE	INFORM	SAY
BARE	INSTRUCT	SET OUT
DECLARE	LET KNOW	SPEAK
DISCLOSE	MENTION	SPORT
EXHIBIT	NOTIFY	SPREAD
EXPLAIN	PRESENT	STAGE
EXPRESS	PUT ON	STATE
FILL IN	RECITE	TROT OUT
GIVE OUT	REPORT	UNVEIL
IMPART	REVEAL	UTTER

May Sudoku

How to solve sudoku puzzles

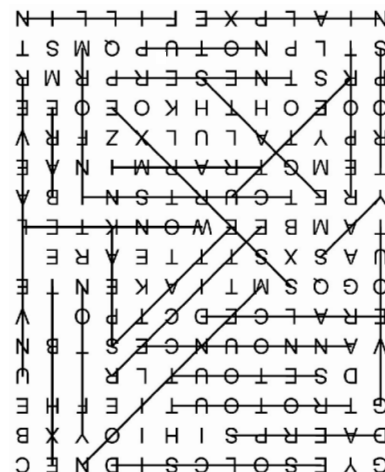
No math is required to solve a sudoku. You only need logic and patience.

Simply make sure that each 3x3 square region has only one instance of the numbers 1-9. Similarly, each number can only

6	7	9	3	4	2	8	1	5
2	1	4	8	7	5	3	9	6
8	5	3	6	1	9	7	4	2
5	2	1	9	3	8	6	7	4
3	8	6	4	2	7	1	5	9
4	9	7	5	6	1	2	8	3
1	3	2	7	5	4	9	6	8
7	4	8	2	9	6	5	3	1
9	6	5	1	8	3	4	2	7

			9	3	4	2		
			4				3	6
	5				9	7		
							7	
3		6				1		9
	9							
		2	7				6	
7		8				5		
			1	8	3	4		

appear once in a column or row in the larger grid. The difficulty on this puzzle is easy.



neighborhood updates



Gentle Reminders

CURBSIDE BULK BRUSH COLLECTION

The city provides free curbside residential brush collection for tree and shrub branches each year beginning in mid-May. Piles will need to be on the curb by Sunday, June 6th. Brush will be collected one time during the week of June 7-11.

- Branches must measure between 3 feet and 8 feet in length and be no greater than 6 inches in diameter.
- Stack branches neatly on parkway with cut ends facing the street. Brush piles that are badly tangled will not be picked up. For more information, visit www.naperville.il.us/services/brush-leaf-and-yard-waste-collection/brush-collection/

NEW CONSTRUCTION OF DECKS AND PATIOS

If you are planning on constructing a new deck or patio on your property this season, a reminder that you must submit an ARC form with to the homeowners association and obtain proper permits, if necessary.

LAWN MAINTENANCE

According to the City of Naperville code – Grass and weeds may not exceed eight (8) inches in height on private property and in the right-of-way. Grass clippings cannot be deposited in the streets.

PARKWAY TREES

Remember that the care and trimming of the parkway trees is the homeowners' responsibility.

WATER CONSERVATION REGULATIONS

AUTOMATIC SPRINKLER USE

Even number addresses on even number calendar days and odd number addresses on odd number calendar days between the hours of 6 - 10 am and 6 - 10 pm.

HAND-HELD HOSE WATERING

Anytime for flowers, gardens, trees and shrubs, root feeders, car washing, children's wading pools (50 gallons or less)

SOD PLACEMENT AND NEW SEEDED LAWNS

Watering 1st day for 8 hours, next 9 days between 6 and 10 am and 6 and 10 pm - Then odd-even schedule .

***** CITATIONS WILL BE ISSUED *****

LOSE FAT AT THE SPEED OF LIGHT!

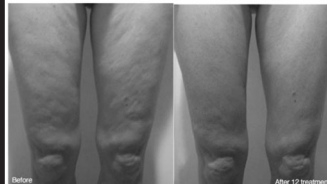


CONTOUR LIGHT

Special Initial Visit
\$49
(Normally \$149)



Contour Light is the latest advancement in non-invasive body contouring technology.



Contour Light will help you slim down those areas that are resistant to diet and exercise: waist, hips, thighs, arms and chin. Lose 5 to 20 inches in less than a month, while supporting detoxification and more youthful skin! No surgery, no pain, no recovery time.



Lose 5 to 20 inches in less than a month!



buchar
wellness center

Natural Health for Life!

SPECIALIZING IN...

- Neck & Back Pain
- Shoulder Pain
- Sciatic Pain
- Migraine Headaches
- Scoliosis

TREATMENTS...

- Chiropractic Care
- Acupuncture
- Massage Therapy
- Nutrition
- Lifestyle Advice

www.bucharfamilychiro.com

3075 Book Rd.
Naperville, IL 60564
630-857-3542

3015 E. New York St.
Aurora, IL 60504
630-820-1330

Douglas Automotive Repair Inc

Quality, Honesty, Service First.

- Providing Quality Automotive Repair Service since 1997
- Family Owned & Operated
- Conveniently located in the Arrowhead Industrial Park: 2 mi west of Rt 59 off/95th St and Wolfs Crossing or 3/4 mi east of Eola Rd and Wolfs Crossing
- Full Service - European, Asian & Domestic
- Extended Warranty Work
- Factory Scheduled Maintenance
- Same Day Service on Most Vehicles
- Customer Shuttle Available In Local Area



630-904-6300

10138 Bode Rd, Unit A
Plainfield IL 60585

Mon-Fri 7:30 AM - 5:00 PM
Closed Weekends & Holidays

Visit our website to check out our current specials.

www.douglasautomotiverepair.com

loveTM PENNCROSS KNOLL

With low inventory and unprecedented market conditions, now is a great opportunity to sell!

Get the advice of a focused full-time broker with a proven track record.
I provide marketing strategies superior to the competition and top-notch negotiation skills.
Let me be your trusted advisor throughout the process of buying or selling.

I am excited to show you the value that @properties can bring to your real estate transaction!
Call me today to maximize the return on the sale of your home! I am ready to work for you.




TERRI CHRISTIAN
NOBODY SELLS A NEIGHBORHOOD LIKE A NEIGHBOR
Broker
630-244-2281
terrchristian@atproperties.com

@properties
47 E. CHICAGO AVE. • NAPERVILLE, IL 60540


*Properties shown have been listed and sold by various participants in the MLS. Source. If your property is currently listed with another broker, this mailer is not a solicitation for business.

Feel the 'Thrill' - take a Ride down the 'Hill'!

SOAP BOX DERBY

Join us for a fun day of 'Gravity Racing' at the
Corner of Diehl & Frontenac Roads in NAPERVILLE
Morning and Afternoon Races - First Race starts at 9am

SPRING RALLY - Sat. & Sun. MAY 1 & 2

SPRING RALLY - Sat. & Sun. MAY 15 & 16

CHICAGO ALL AMERICAN LOCAL - Sat. & Sun. JUNE 5 & 6

It's a Great Day for a Race!

Try out racing for yourself - Race for Awards* or take a demo ride down the 'hill'!

We'll supply the race car - bring your own bike helmet or borrow one of ours.**

Registration open to ages 7-20. To Register to race or for more information: Call Stan Iglehart 630.841.8832

www.soaphoxderby.org/greater-chicago.aspx



Greater-Chicago-Soap-Box-Derby



*All racers under 18 must be accompanied by parent or guardian. Entry fee required to race in qualified races. No fee for a demo ride.

**Due to Covid-19, we are following CDC guidelines and sanitizing all equipment. We ask that all participants and spectators wear properly fitting masks and practice social distancing.

AccuMax, Inc.

HEATING & COOLING

FATHER AND SON SINCE 1990.
WE TREAT YOU THE WAY WE WANT TO BE
TREATED... HONEST, RELIABLE AND
STRAIGHT FORWARD.
A SMALL FAMILY-OWNED LOCAL BUSINESS.



630-717-9773



FAST,
PROFESSIONAL,
SAME DAY SERVICE



Look for our trucks in your neighborhood!

AccuMaxInc.com



CALL ERICA
WITH ANY
QUESTIONS!

HEATING • COOLING • SERVICE • SALES • INSTALLATIONS

Transform Your Outdoor Space...

- Patios
- Natural Stone
- Retaining Walls
- Plantings
- Walks
- Lighting
- Outdoor Kitchens
- Ponds & Fountains
- Fireplaces & Fire Pits
- Pergolas & Pavilions
- Decks
- Lawn & Yard Maintenance

Live Life Beautifully!

P.A. **LIKES**, Inc.
www.likeslandscaping.com
630-904-TREE (8733)





ALLEGRA[®]

MARKETING • PRINT • MAIL



Capture Your Audience's Attention!

Brochures • Banners • Event Signs • Promo Items • And More!

Ask about our new
poster printer

www.allegranaperville.com

katherine@allegranaperville.com

630-337-6714

Call Allegra for ideas that deliver.



www.allegranaperville.com
katherine@allegranaperville.com
 630-337-6714



APOLLO MUSIC

Private lessons for all instruments and voice

Call: 630.499.1911
www.apollomusicinc.com

ONE FREE LESSON
 With purchase of four (4)

Allegra Marketing Print Mail
 2200 Ogden Avenue, Ste. 550, Lisle, IL 60532

PRSRT STD
 U.S. Postage
 PAID
 Fox Valley, IL 60599
 Permit No. 945

100%
PENNY

WHEN YOU HIRE
 PENNY TO SELL
 YOUR HOME –
 YOU **GET** PENNY TO
 SELL YOUR HOME



CALL NOW
 630.207.7001

PENNY
 O'BRIEN

penny.obrien@bairdwarner.com

Penny closes more
 60564 listings than
 any other agent.*

*Based on closed units in last 12 months, source MRED/Infosparcs.